

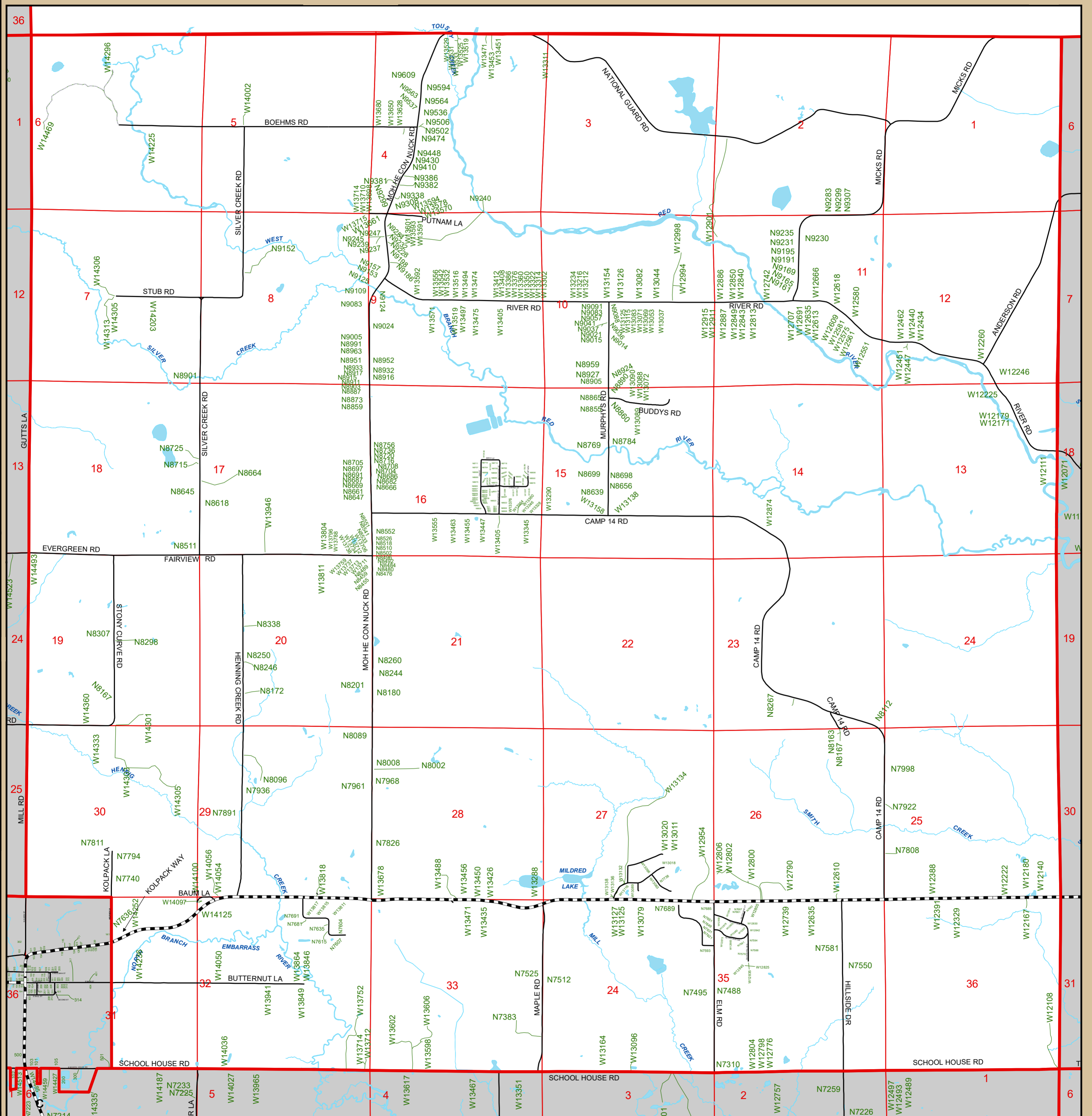
Town of Bartelme

T.28 N R.13 E.

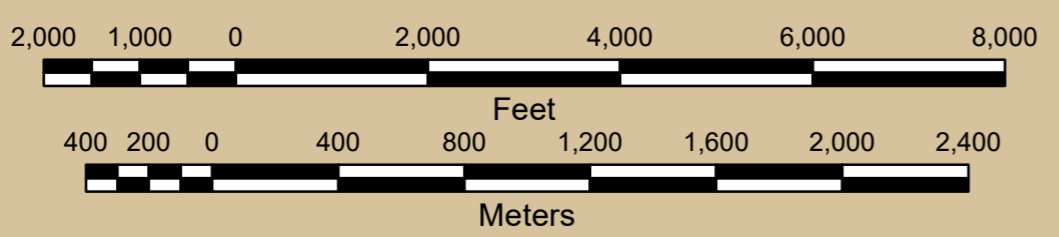
Legend

- Federal/State Highways
- County Highways
- Town/Municipal Roads
- Private Roads
- Railroads
- Waterbodies

W14500 W14100 W13700 W13300 W12900 W12500 W12100



N9700 N9300 N8900 N8500 N8100 N7700 N7300



Information depicted on this map was interpreted from digital orthophotography and various other land records. An attempt was made to accurately represent the information shown hereon, however, recent changes in the physical and cultural landscape may not be represented. This map is intended for planning and general use only. Please refer to the original source documents for detailed information. If you have any questions or discover any discrepancies on this map, please contact the Shawano County Technology Services Dept. 715-526-4614.



Cartography: David Poffinberger, GIS
 Shawano County GIS Coordinator/Land Information Officer
 Date: 01 March 2018

Town of Bartelme